

# FOR Sale

*North Larkey Rd Lot 2  
Oxford, CT*



**23.5 Acre Industrial Zoned Parcel (Divisible)**

**All Utilities Available**

**High growth business friendly municipality**

**Near Oxford/Waterbury Airport**

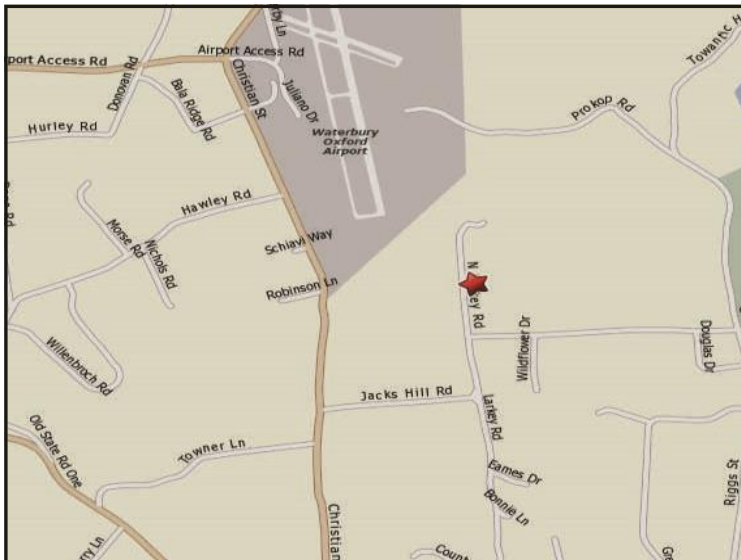
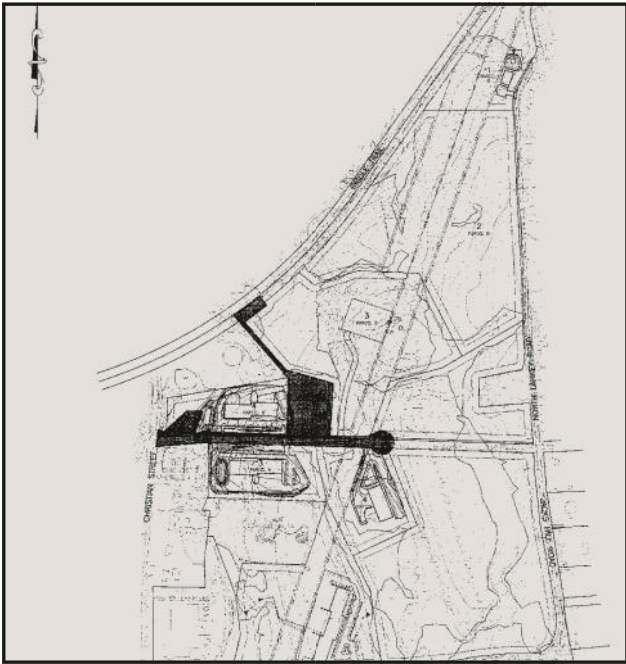
**Good proximity to I-84 and Route 8**

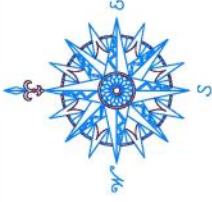
**Owner will consider a lease or build to suit.**

**New airport enterprise offers potential for significant tax incentives.**

**Offered at \$995,000.00**

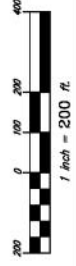
**Lot 2 / Oxford Industrial Park  
North Larkey Rd, Oxford, CT**





NO.	REVISION	DATE

Previous Editions Obsolete



DAVID SIPPIN  
234 MAIN STREET  
MONROE, CT

AERIAL LOCATION MAP

COMMERCE DRIVE

**Civil C1**

OXFORD CONNECTICUT

CORNERSTONE PROFESSIONAL PARK, SUITE D-101  
43 WEST MAIN STREET  
WOODBRURY, CT 06718

ISSUED BY	APPROVED BY
SCALE: 1" = 200'	DATE: 26 MAR 13
PROJECT NO: 3114	DATE PLOTTED: 3114
DRAWING NO: 3114	

**1 OF 1**

