

FOR SALE/LEASE

136 New Haven Road (RTE. 67)
Seymour, CT

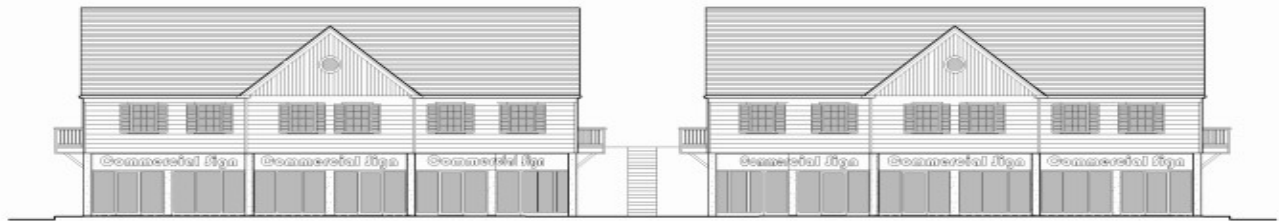


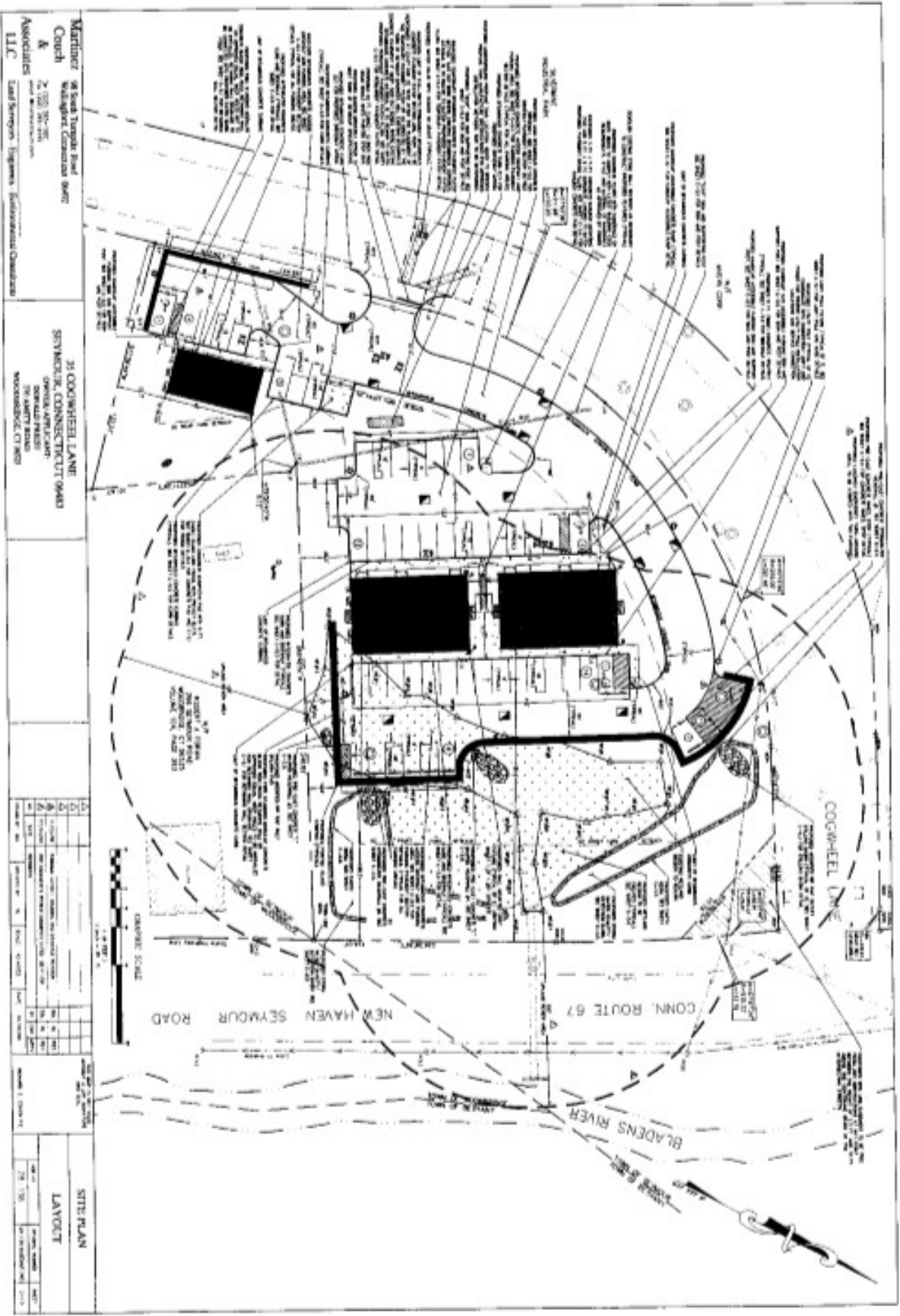
1.8 Acres

- Owner will build to Suit
- Great High Traffic Signalized Corner on busy Highway Road (8,400 cars per day per DOT)
- Site is Approved for 10,800 S/F of Buildings
- Designed for Two - Two Story 4,800 S/F Buildings with Both Levels at Parking Grade. Also a Freestanding 1,100 S/F Building
- Potential Redesign for Possible Food or Bank Drive Thru
- Water and Sewer Available

Sale asking: \$695,000.00

Lease rate: TBD





Martinez
 91 South Temple Road
 Waterbury, Connecticut 06702
 203-253-7000
 Associates
 Land Surveyors Engineers Environmental Chemists

31 COGNATE LANE
 WATERBURY, CONNECTICUT 06702
 OFFICE ADDRESS
 203-253-7000
 WOODBRIDGE, CT 06792

NO.	DATE	DESCRIPTION	BY	CHKD.
1	10/15/00	PRELIMINARY LAYOUT	SM	SM
2	11/15/00	REVISED LAYOUT	SM	SM
3	12/15/00	FINAL LAYOUT	SM	SM

NO.	DATE	DESCRIPTION	BY	CHKD.
1	10/15/00	PRELIMINARY LAYOUT	SM	SM
2	11/15/00	REVISED LAYOUT	SM	SM
3	12/15/00	FINAL LAYOUT	SM	SM

SITE PLAN
 LAYOUT
 DATE: 12/15/00
 DRAWN BY: SM
 CHECKED BY: SM

