

FOR LEASE

*76 Watertown Rd
Thomaston, CT 06787*



Thomaston's Vibrant New Power Center
Retail / Professional Office Space
2 x 1,500 S/F Suites
1 x 2,485 S/F Suite
Ideal for retail, office and business professionals
Located right off Route 8 and Exit 38
Lease Rate: \$14.00 to \$16.00 PSF Gross

PROPERTY DATA FORM

PROPERTY ADDRESS	76 Watertown Road
CITY, STATE	Thomaston, CT 06787

BUILDING INFO

Total S/F	36,678 +/-
Number of Floors	2
Avail. S/F	5,485 +/-
Will Subdivide To...	
Avail. Docks	
Ext. Construction	Block
Int. Construction	
Ceiling Height	8' - 16'
Roof	New
Date Built	2015

UTILITIES

Sewer	City
Water	City
Gas	Yes
Electrical	200 amps

MECHANICAL EQUIP.

Air Conditioning	Central
Sprinkler / Type	Yes
Type of Heat	Gas/ Eclectic

TAXES

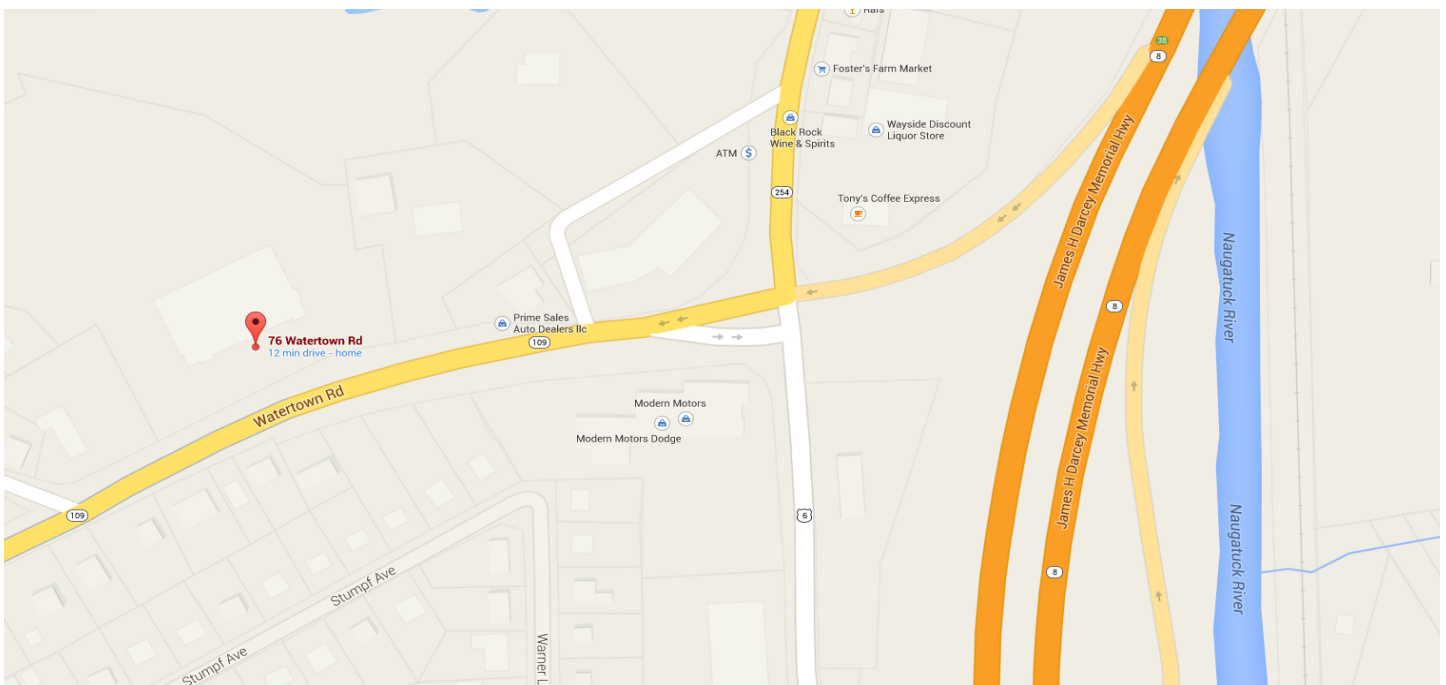
Assessment	
Mill Rate	
Taxes	TBD

OTHER

Total Acres	8 +/-
Zoning	Commercial
Parking	Ample
State Route / Distance To...	Route 8 / Exit 38

TERMS

Lease Rate	\$12- \$16 PSF Gross
------------	----------------------



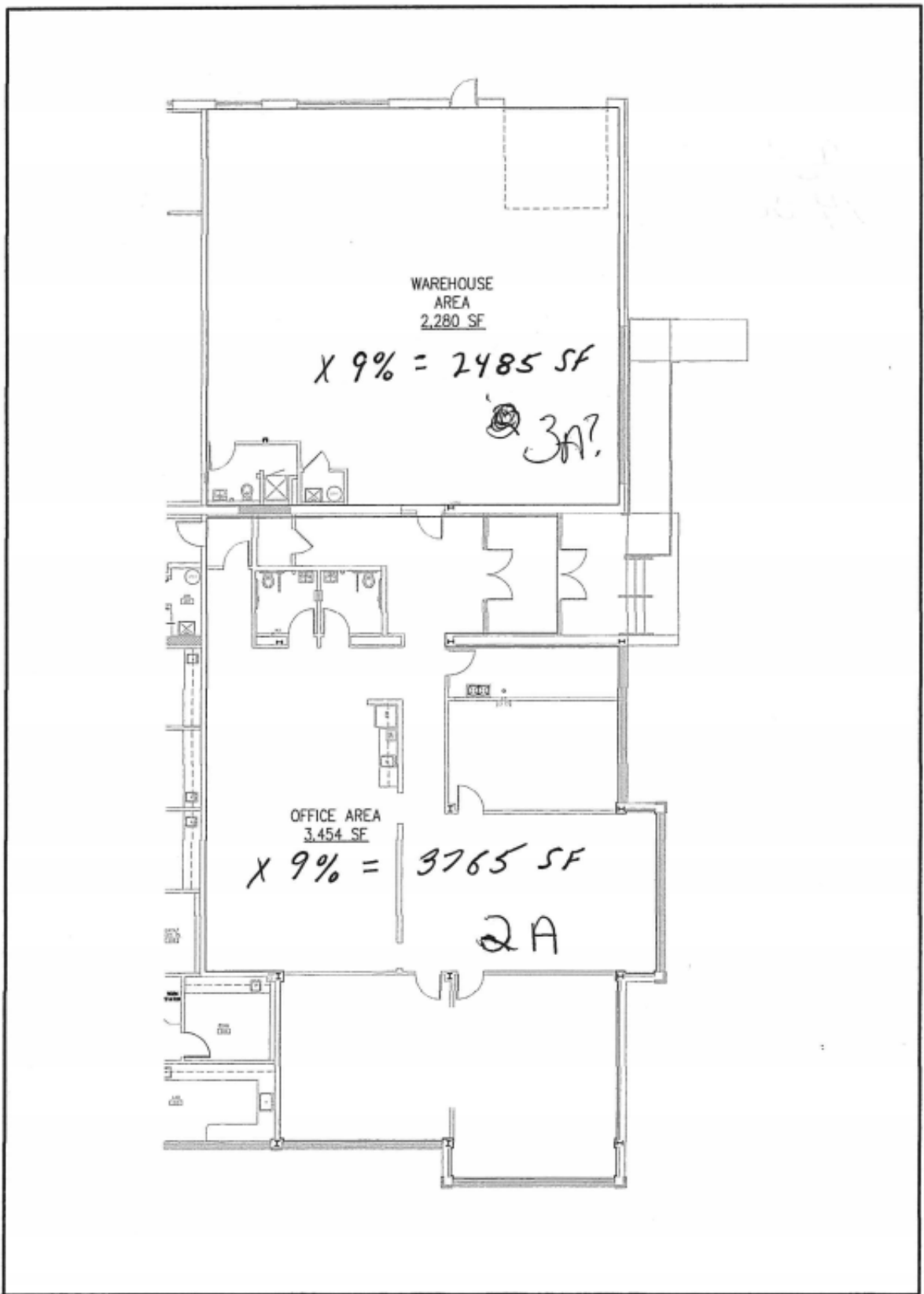


Original Building



Newly designed 2015





AVAILABLE SQUARE FOOTAGE	
Project No.	42221
Sheet No.	
Drawn By	
Checked By	

JK ENERGY

Usable Square Footage
76 Watertown Road
Thomaston, CT

Copyright © 2009
JK Energy, P.E. #21741

COPYRIGHT © 2009
BY GR ENGINEERING, LLC.
ALL DESIGN PRESENTED ARE
THE SOLE PROPERTY OF
GR ENGINEERING, LLC AND MAY
NOT BE LOANED, REPRODUCED OR
DISTRIBUTED WITHOUT
PERMISSION FROM
GR ENGINEERING, LLC

GR Engineering, LLC
Licensed Professional Engineers
Design/Build Services

130 East Main Street - Unit #5
Thomaston, Connecticut 06207 (860) 228-6000
info@gr-engineering.com