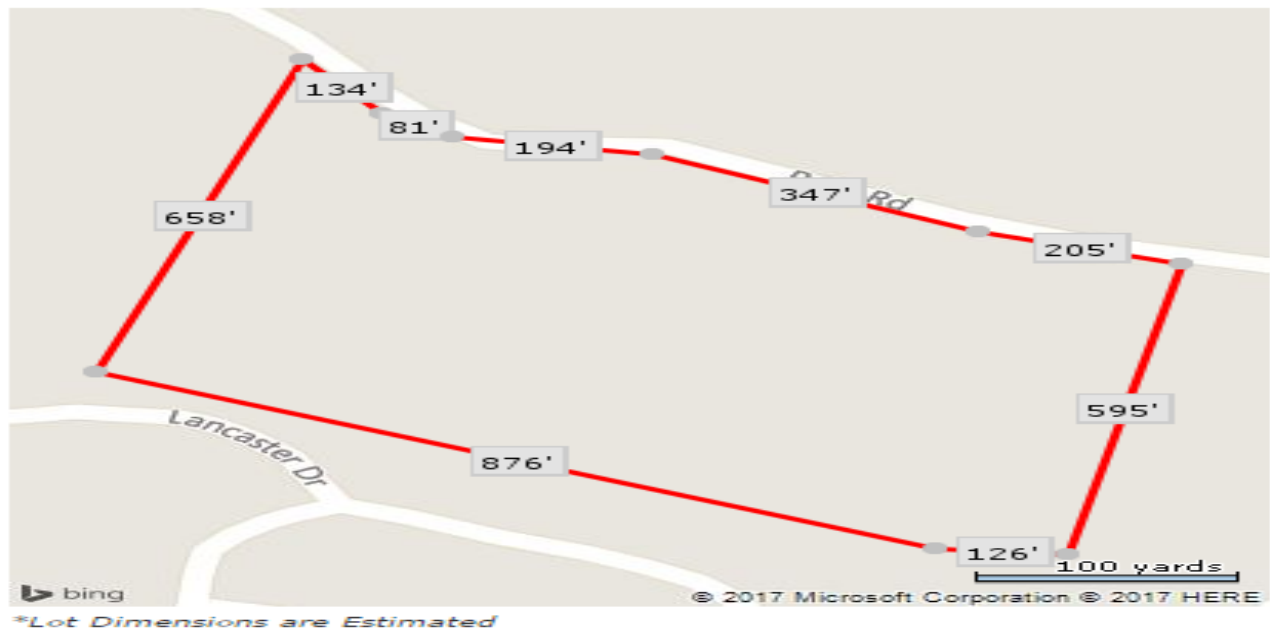


FOR SALE

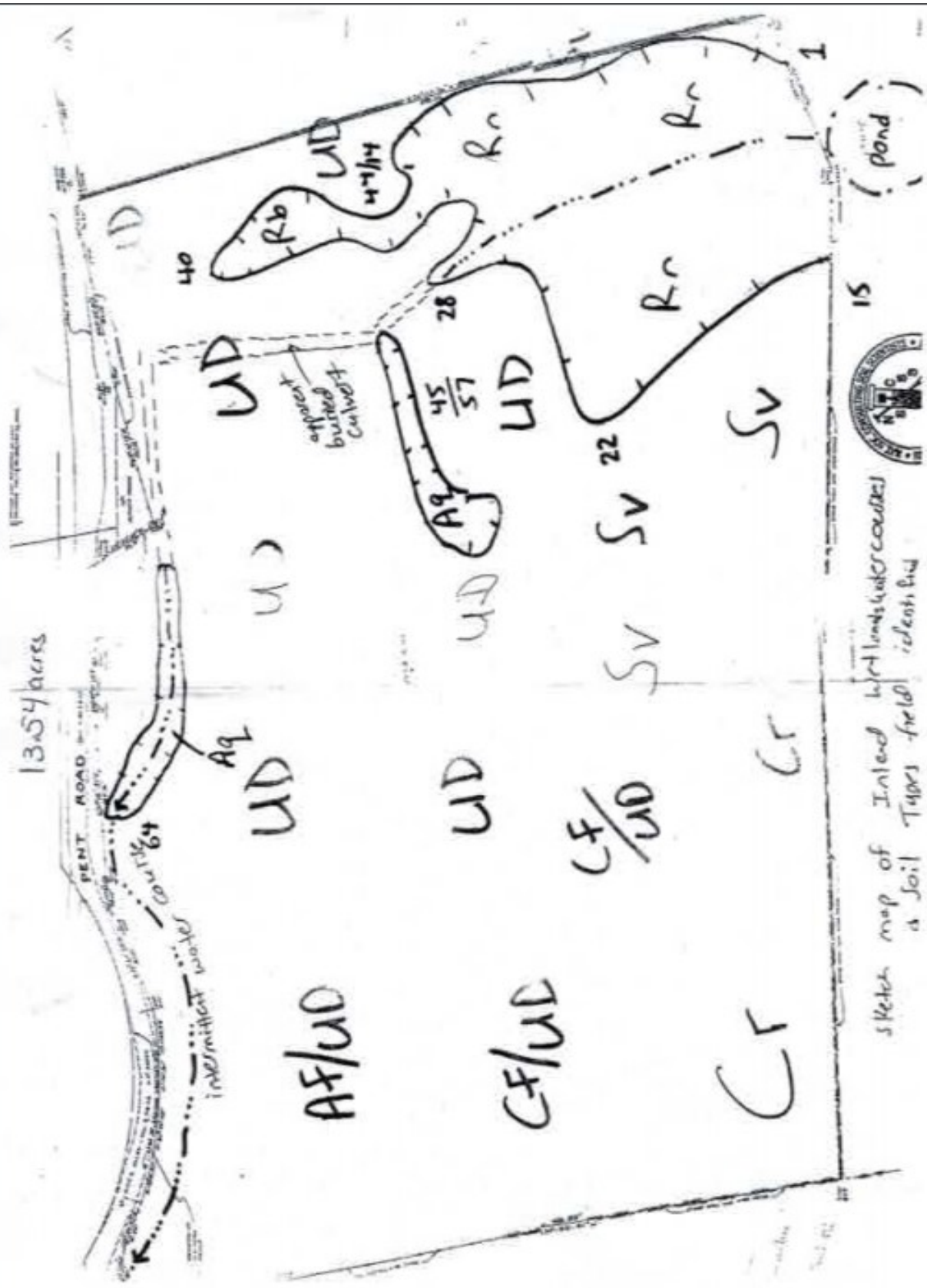
75 Pent Road
Beacon Falls, CT



13.5 Acres Industrial Land

- Industrial zoned parcel with access off of Pinesbridge Road Industrial Park at the end of Lancaster Drive
- Great location minutes to Route 8 highway
- All municipal utilities available
- Enterprise corridor benefits possible for many uses offering significant tax abatements

Offered at: \$795,000.00



A2575B

ROBERT M. & DORIS W. GONAGOLA

2 Wide Ditch
3 Wide Ditch

JULES WERNICK

WILLIAM H. & ANNE L. STEINBACHER



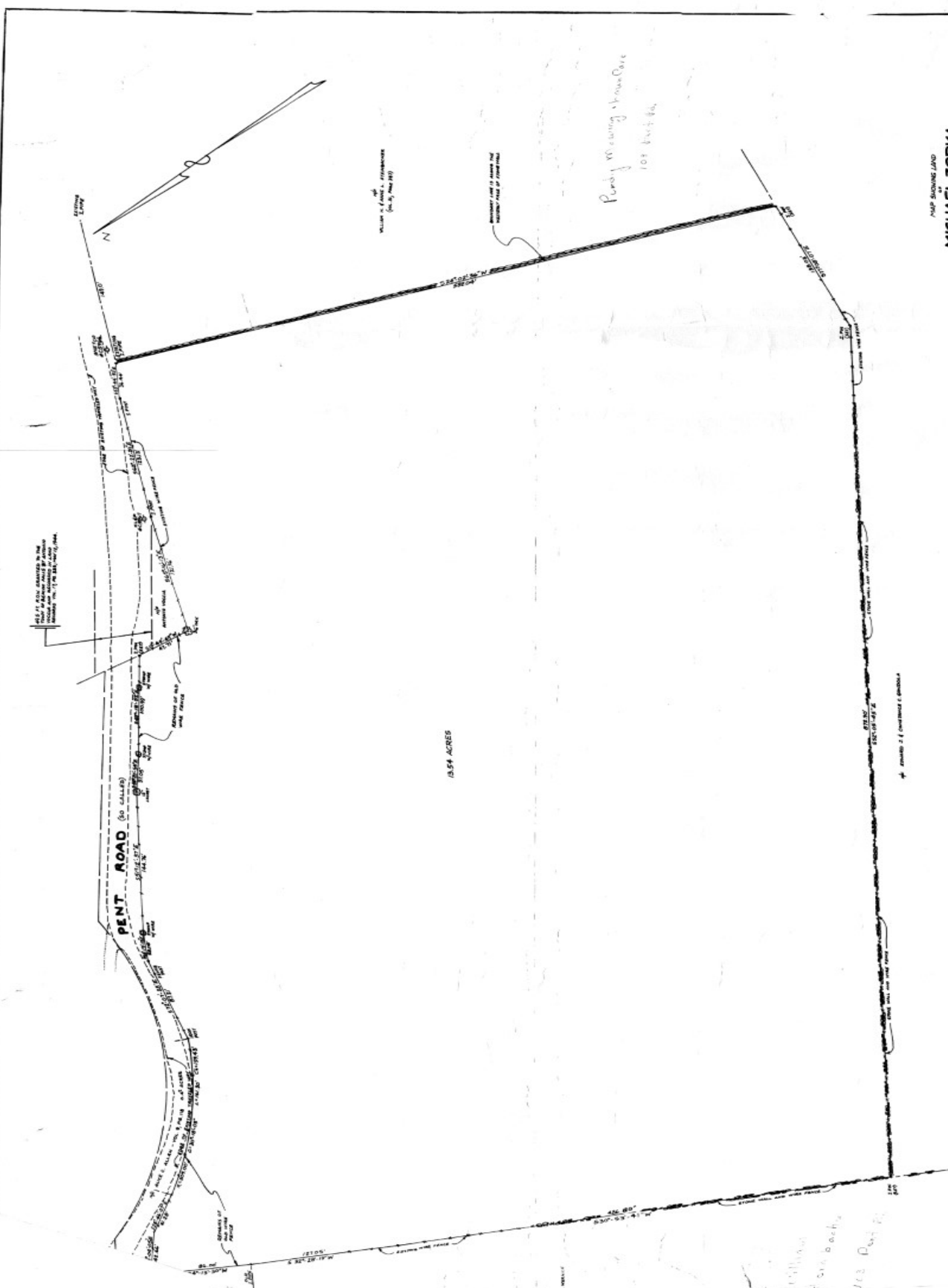
LEGEND

- Proposed Contour
- - - Existing Contour
- Proposed Final Contour upon Elimination of Sedimentation Basin

WALTER OPUSZYNSKI
BERCON FALLS
CONN.
SCALE: 1" = 40'

NOYAKOWSKI, OBYMACHOW & KANE
ENGINEERING SURVEYING
CORPORATION
CONN.

A2575B



ALL RIGHTS RESERVED BY THE
 SURVEYOR
 AUGUST 23, 1977

WILLIAM J. ZOPKA, SURVEYOR
 (No. 10428)

PROPERTY LINE OF PENT ROAD
 (60 FEET)

Ready to survey of new base
 103 feet 8 1/2"

18.54 ACRES

18.54 ACRES

MAP SHOWING LAND
MICHAEL ZOPKA
 BEACON FALLS AUGUST 23, 1977
 18.54 ACRES

103 feet 8 1/2"
 103 feet 8 1/2"
 103 feet 8 1/2"

