

FOR LEASE



237 East Aurora Street Waterbury, CT

Unit 1B - 4,800 S/F
Warehouse with
1 Loading Dock
300 S/F Office
Outside storage
possible
200 Amps, 480 V
11' Ceilings

Lease: \$4.95 PSF NNN

Unit 5B - 5,338 S/F
Warehouse with
3 Loading Docks
Outside storage
possible
12' Ceilings
200 Amps, 480 V

Lease: \$4.95 PSF NNN

Unit 6A - 5,155 S/F
Small office area with
1 Loading Dock
11' Ceilings
200 Amps, 480 V

Lease: \$4.95 PSF NNN

Enterprise zone benefits

Prime location at the crossroads of I-84 and Route 8

Good Power - Wet sprinkler system - Gas fire hanging unit

PROPERTY DATA FORM

PROPERTY ADDRESS	237 East Aurora Street		
CITY, STATE	Waterbury, CT		
BUILDING INFO		MECHANICAL EQUIP	
Total S/F	79,500	Air conditioning	Possible
Number of floors	1	Sprinkler	Yes
Avail S/F Unit 6A	5,150 s/f small office space with 1 loading dock	Type	Wet
Avail S/F Unit 5B	5,338 s/f warehouse space ,338 s/f warehouse space	Type of heat	Gas
Exterior construction	Block	Total acres	10.8
Interior construction	Block	Rail spur	Yes
Ceiling height	12'	Zoning	IG
		Parking	Ample
UTILITIES		State Route	Route 8
Sewer	City	Distance to	Less than ½ mile
Water	City	TERMS	
Gas	Yes	Lease rate	\$4.95 PSF NNN
Electric	200 amps		

ENTERPRISE ZONE BENEFITS

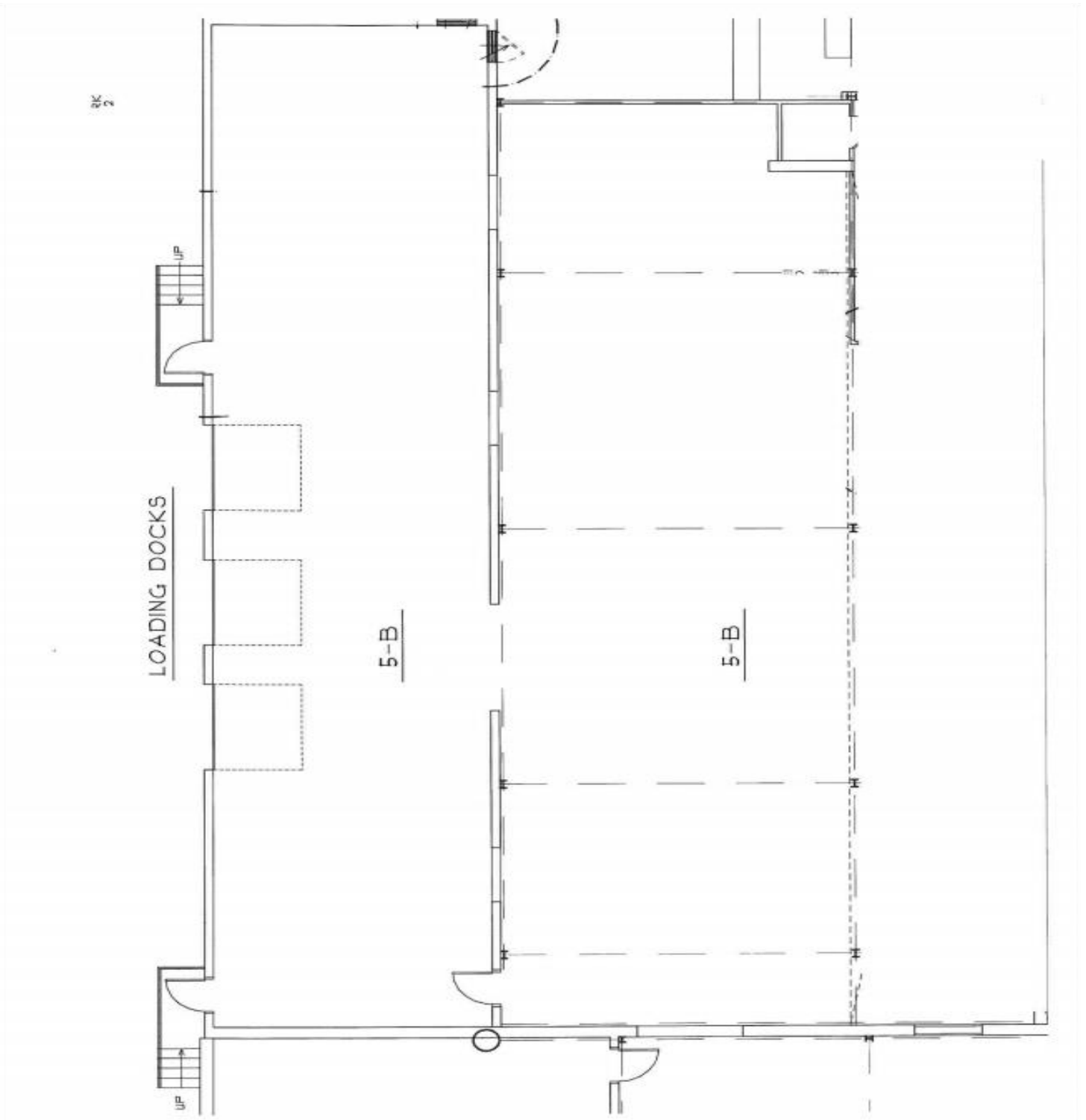
80% tax abatements on real estate taxes and personal property taxes for 5 years

50% reduction on state corporate tax for 10 years

Job grants available based on business SIC code



Unit 5 - B



CONTACT: ED GODIN, SIOR

E-mail: EGodinpb@gmail.com

www.GodinPropertyBrokers.com

Phone: 203-577-2277 Fax: 203-577-2100

Unit 6 - A



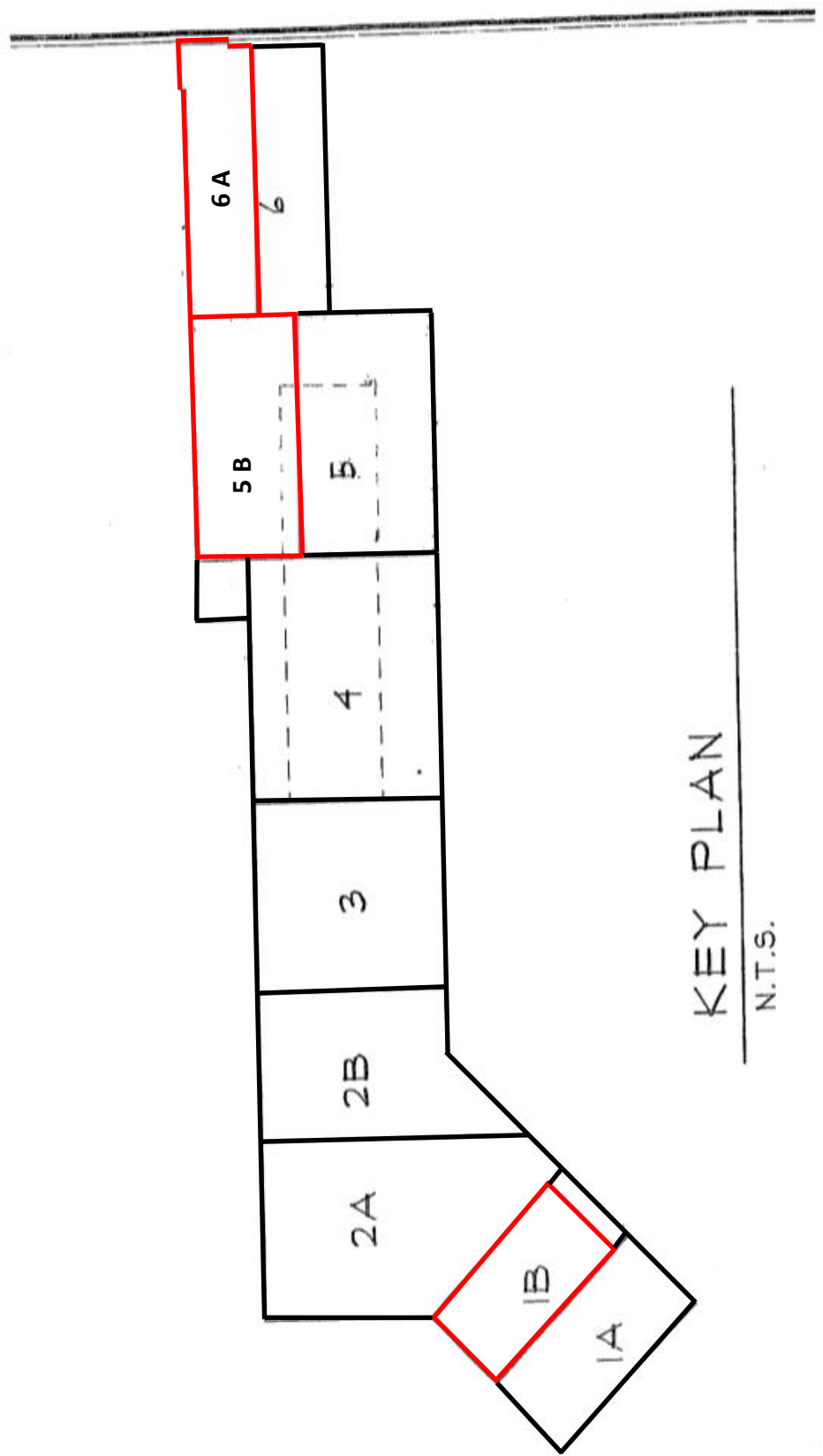
PARTIAL FLOOR PLAN
SCALE: 1/8" = 1'-0"

CONTACT: ED GODIN, SIOR

E-mail: Egodinpb@gmail.com

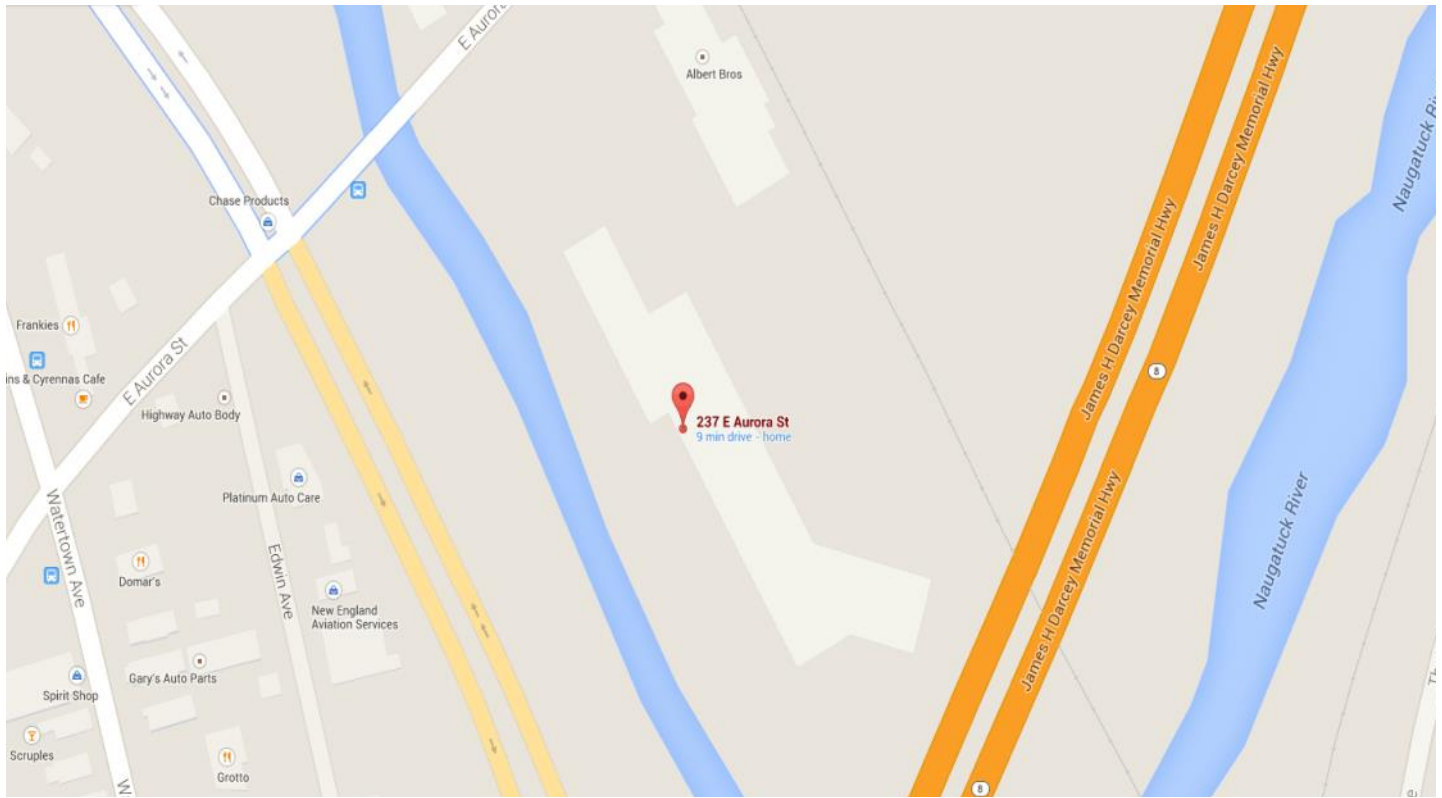
www.GodinPropertyBrokers.com

Phone: 203-577-2277 Fax: 203-577-2100



KEY PLAN

N.T.S.



CONTACT: ED GODIN, SIOR
E-mail: Egodinpb@gmail.com
www.GodinPropertyBrokers.com
Phone: 203-577-2277 Fax: 203-577-2100