



CONTACT: BRIAN GODIN

E-mail: Bgodinpb@gmail.com

www.GodinPropertyBrokers.com

Phone: 203-577-2277 Fax: 203-577-2100

850 Straits Turnpike, Suite 204

Middlebury, CT, 06762



***120 - 130 Main Street South
Thomaston, CT 06787***

12,770 +/- S/F

Modern Office/Retail Building

Great Location on busy Main Street (Route 6)

Ideal for Retail, Professional and Medical Users

Available Spaces:

Main Level Retail: 1,600 - 7,900 S/F \$14 PSF Gross + Utilities

Suite 1C: 4,300 S/F Previous Medical Space

Upper Level: Executive Suites from \$475.00 Mo.

Includes: Utilities & WIFI

All information furnished is from sources deemed reliable and is submitted subject to errors, omissions, change of other terms of conditions, prior sale, lease or financing or withdrawal-all without notice. No representation is made or implied by Godin Property Brokers, LLC or its associates as to the accuracy of the information submitted herein.



**Executive Suites Includes:
Utilities - WIFI
From \$475.00 Mo.**



CONTACT: BRIAN GODIN

E-mail: BgodinPB@gmail.com

www.GodinPropertyBrokers.com

Phone: 203-577-2277 Fax: 203-577-2100

Top Floor (15% common areas)			
Exit / Stairs	Womans Room	A/C Units	Men's Room
common hallway			
207	1000 s/f	206	400 s/f
207	400 s/f	205	400 s/f
207	400 s/f	204	500 s/f
207	400 s/f	203	575 s/f
207	400 s/f	202	575 s/f
207	400 s/f	201 A-D	475 s/f
207	400 s/f	201 A-D	Suite A LEASED
207	400 s/f	201 A-D	Suite B \$525.00
207	400 s/f	201 A-D	Suite C \$525.00
207	400 s/f	201 A-D	Suite D \$475.00
Main Floor			
Exit / Stairs			Exit / Stairs
1C	4,300 s/f	1B	1,600 s/f
1C	4,300 s/f	1A	2,000 s/f
Available		Available	Available

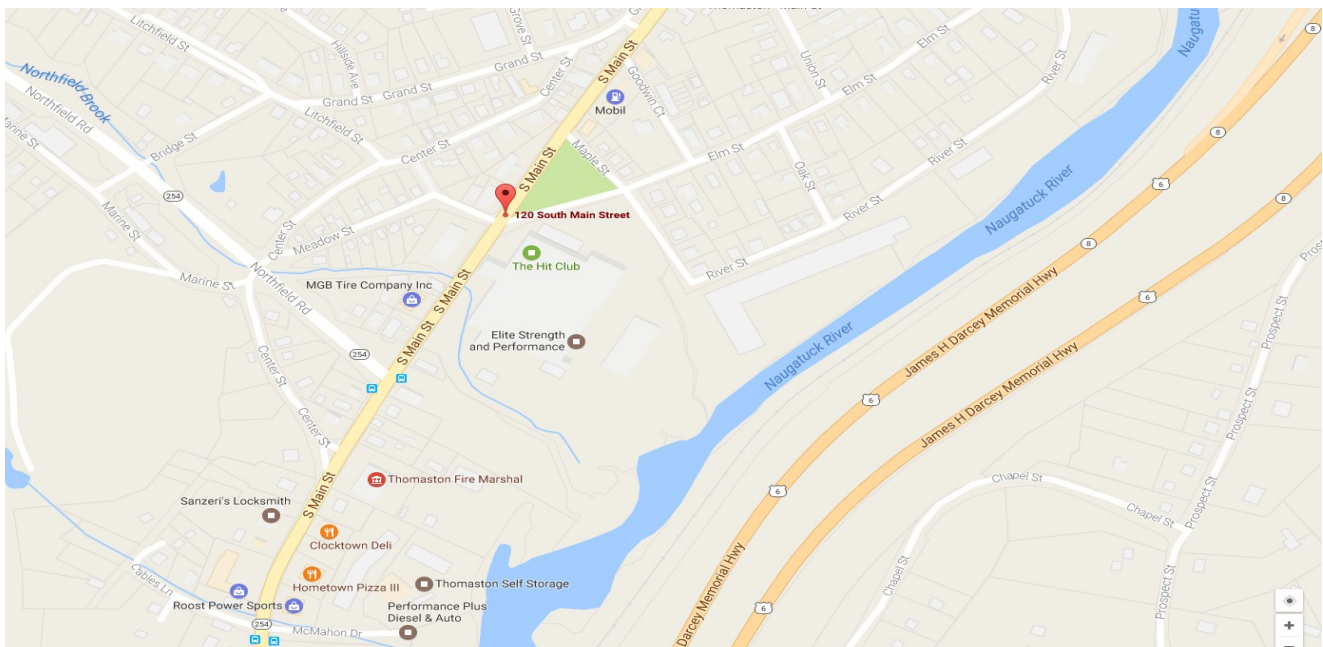
Note: Floor plan not to size

PROPERTY DATA FORM

PROPERTY ADDRESS	120 -130 Main Street South
CITY, STATE	Thomaston, CT 06787



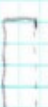
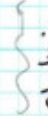

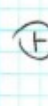
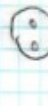

BUILDING INFO		MECHANICAL EQUIP.	
Total building S/F	12,770	Air Conditioning	Central
Number of floors	2	Sprinkler / Type	
Avail S/F	8,500 +/-	Type of Heat	Forced hot air
Will subdivide to	250	OTHER	
Office space		Acres	.77
Ext. Construction	Brick	Parking	Ample
Ceiling Height	9'	State Route / Distance To...	Route 8/ 2.5 miles
Roof	Gable new 2018	Zoning	IP
Date Built	1989	TAXES	
UTILITIES		Assessment	\$600,250.00
Sewer	City	Mill Rate	33.63
Water	City	Taxes	\$20,186.41
Gas	Yankee Gas	TERMS	
Electrical	100 Amps	Lease rate	\$8- \$14 per S/F Gross Suites from \$475 mo.

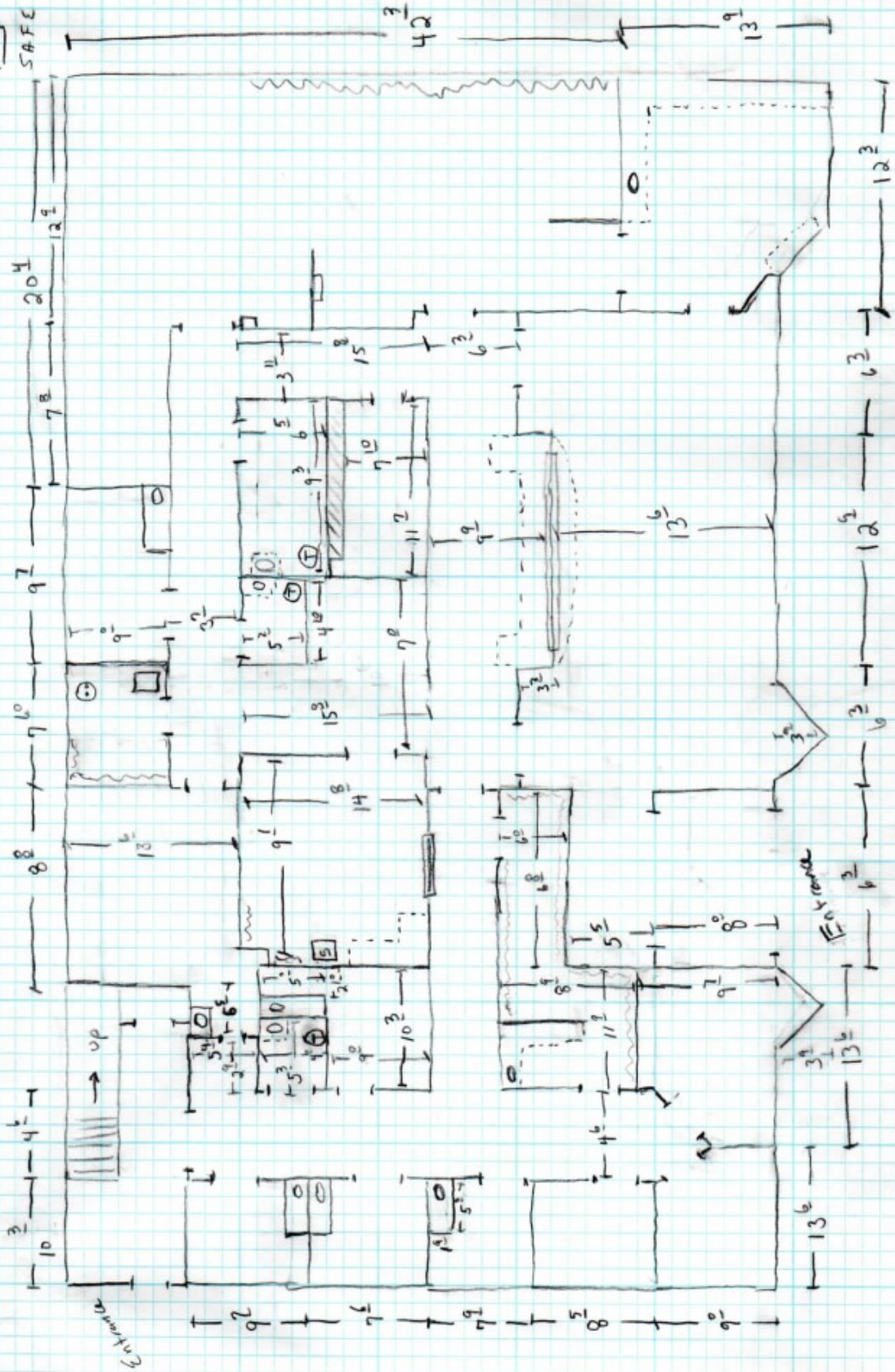
**New roof 2018
New fire alarm system**



All information furnished is from sources deemed reliable and is submitted subject to errors, omissions, change of other terms of conditions, prior sale, lease or financing or withdrawal-all without notice. No representation is made or implied by Godin Property Brokers, LLC or its associates as to the accuracy of the information submitted herein.

130
South Main St
Thomaston CT

-  chase wall
-  Sink + Cabinet
-  Counter w/o Cabinet
-  Shedding
-  Sliding Glass Window
-  Toilet
-  Elec Hot water Heater
-  Utility Sink



Suite 1 C