

FOR LEASE

CONTACT: BROOK LADRIGAN

E-mail: bladrigan.gpb@gmail.com

850 Straits Turnpike Suite 204

Middlebury, CT 06762

www.GodinPropertyBrokers.com

Phone: 203-577-2277 Fax: 203-577-2100

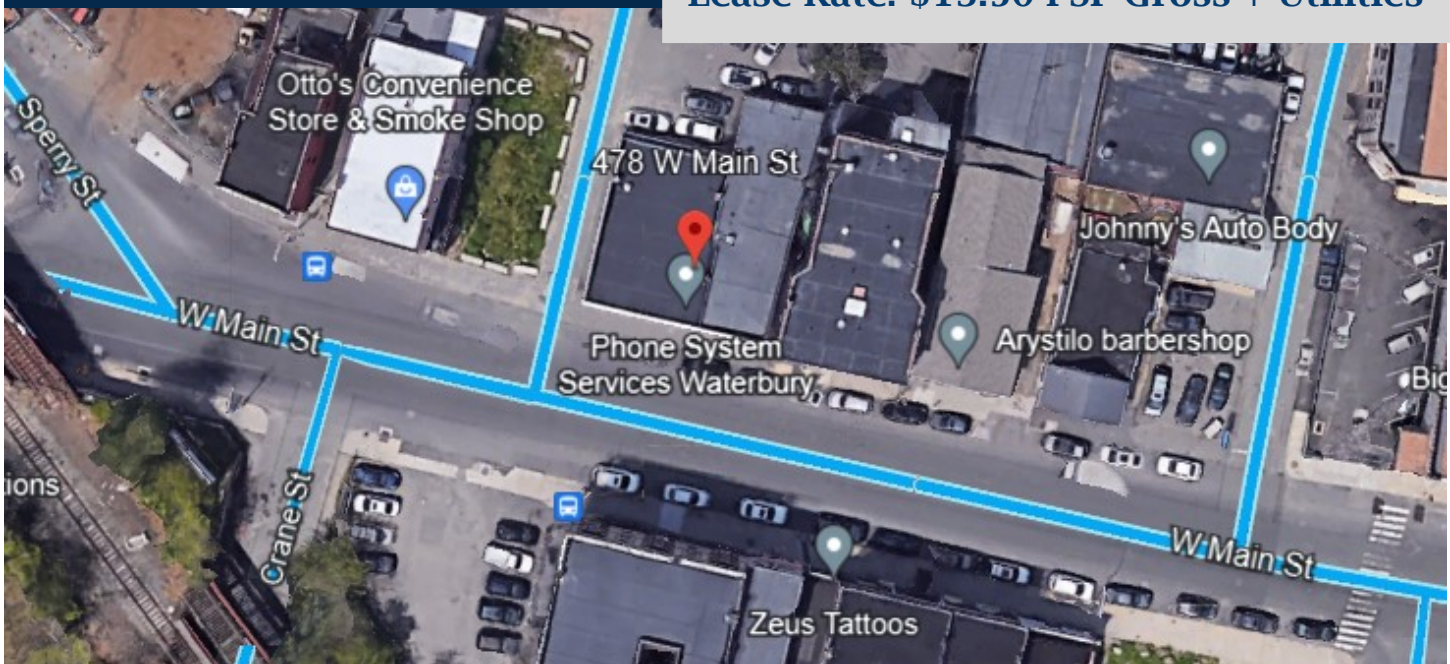


**478 West Main Street
Waterbury, CT 06702**

**Office Space in Highly Visible
Downtown Location**

**1st Floor - 6 Offices (1,128 +/- S/F)
2020 Complete Remodel**

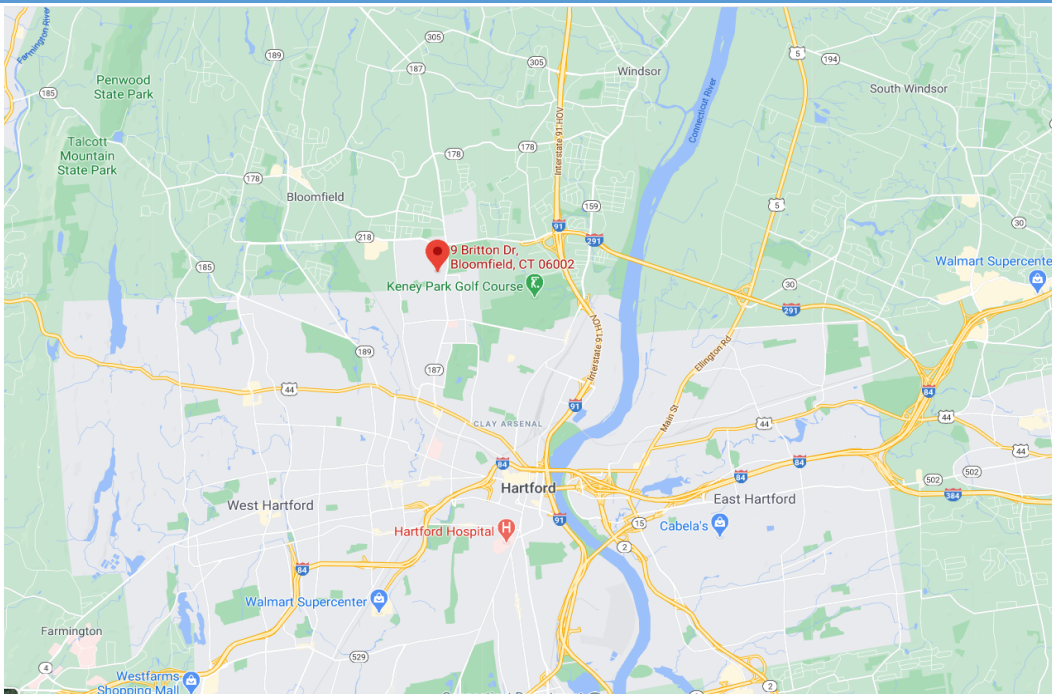
Lease Rate: \$13.50 PSF Gross + Utilities



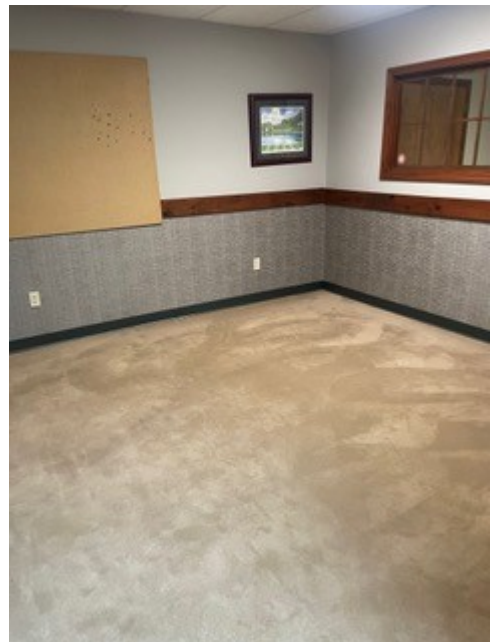
All information furnished is from sources deemed reliable and is submitted subject to errors, omissions, change of other terms of conditions, prior sale, lease or financing or withdrawal-all without notice. No representation is made or implied by Godin Property Brokers, LLC or its associates as to the accuracy of the information submitted herein.

PROPERTY DATA FORM

PROPERTY ADDRESS		478 West Main Street	
CITY, STATE		Waterbury, CT 06702	
BUILDING INFO		MECHANICAL EQUIP.	
Total S/F	4,048 +/-	Air Conditioning	Offices - Centrao
Number of floors	1	Sprinkler / Type	Yes
Avail S/F	1,128 +/-	Type of Heat	Forced Hot Air
Office space	810 +/- s/f	OTHER	
Ceiling Height	9'	Acres	0.17
Roof	Flat	Zoning	CBD
Ext. Construction	Brick, Siding	Parking	Parking Lot / Street
Date Built	1905	State Route / Distance To...	
		TAXES	
		Assessment	
UTILITIES	Tenant/Buyer to Verify	Appraisal	
Sewer	City	Mill Rate	
Water	City	Taxes	
Gas	EverSource	TERMS	
Electrical	Eversource	Sale	N/A
Amps	200 amps / 3 phase	Lease	\$13.50 PSF Gross + Utilities



All information furnished is from sources deemed reliable and is submitted subject to errors, omissions, change of other terms of conditions, prior sale, lease or financing or withdrawal-all without notice. No representation is made or implied by Godin Property Brokers, LLC or its associates as to the accuracy of the information submitted herein.



CONTACT: BROOK LADRIGAN

E-mail: bladrigan.gpb@gmail.com

Phone: 203-577-2277 Fax: 203-577-2100



CONTACT: BROOK LADRIGAN

E-mail: bladrigan.gpb@gmail.com

Phone: 203-577-2277 Fax: 203-577-2100