

FOR LEASE



**1015 Meriden Road
Waterbury, CT 06705**

**Chelsea Square Center
Retail/Office Units Available
2 Units Plus Garage Available
Located on Busy Meriden Road
Asking :**

**Unit #4 1,200 +/- s/f - \$1,600 plus utilities
Unit #5 1,600 +/- s/f - \$2,000 plus utilities
Garage 400 +/- s/f - \$500 plus utilities**



PROPERTY DATA FORM

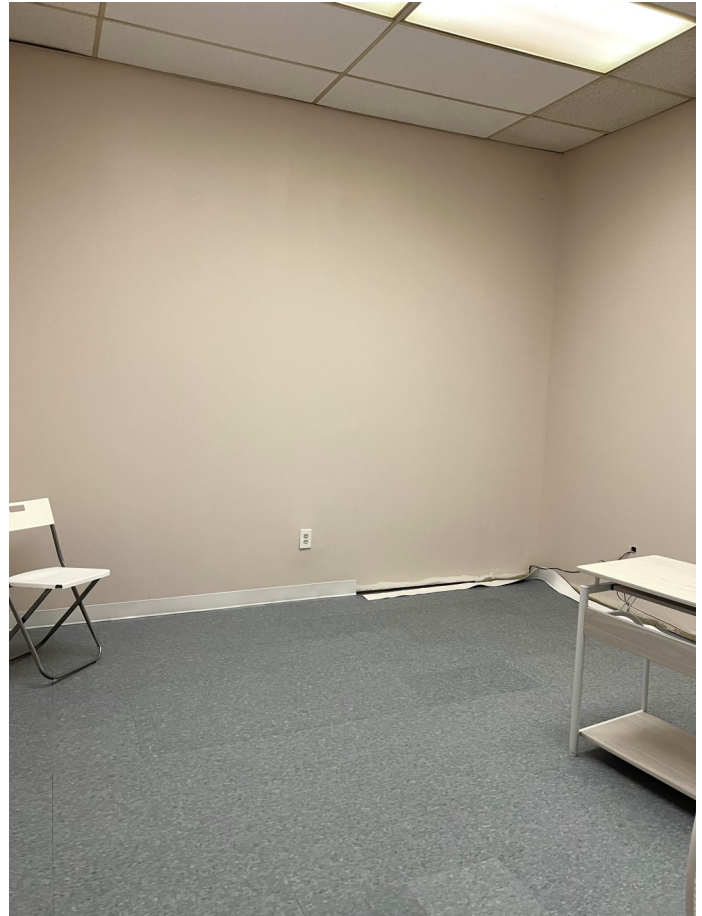
PROPERTY ADDRESS	1015 Meriden Rd
CITY, STATE	Waterbury, CT 06705

BUILDING INFO		MECHANICAL EQUIP.	
Total S/F	11,200 +/-	Air Conditioning	A/C
Number of floors	1	Sprinkler / Type	
Avail S/F	5,000 +/-	Type of Heat	Gas
Office Space		OTHER	
Drive in Doors	Loading Dock	Acres	1.12
Ext. Construction		Zoning	Retail/shopping center
Ceiling Height		Parking	Full parking lot
Roof	New	State Route / Distance To...	I-84
Date Built	1987	TAXES	
UTILITIES		Assessment	
Tenant/Buyer to Verify		Appraisal	
Sewer	City	Mill Rate	
Water	City	Taxes	
Gas	EverSource	TERMS	
Electrical		Asking:	Unit #4 \$1,600 Monthly
			Unit #5 \$2,000 Monthly
			Garage \$500 Monthly
			Plus Utilities

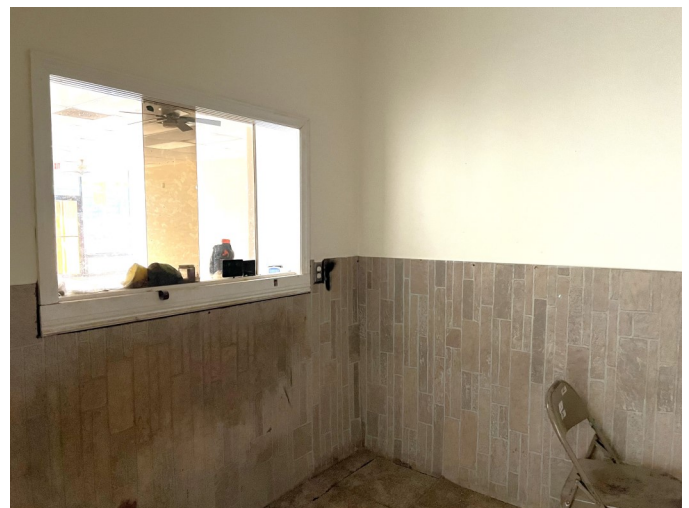


All information furnished is from sources deemed reliable and is submitted subject to errors, omissions, change of other terms of conditions, prior sale, lease or financing or withdrawal-all without notice. No representation is made or implied by Godin Property Brokers, LLC or its associates as to the accuracy of the information submitted herein.

Unit 4
1,200 +/- s/f
Large Open Area with 2 or 3 Offices



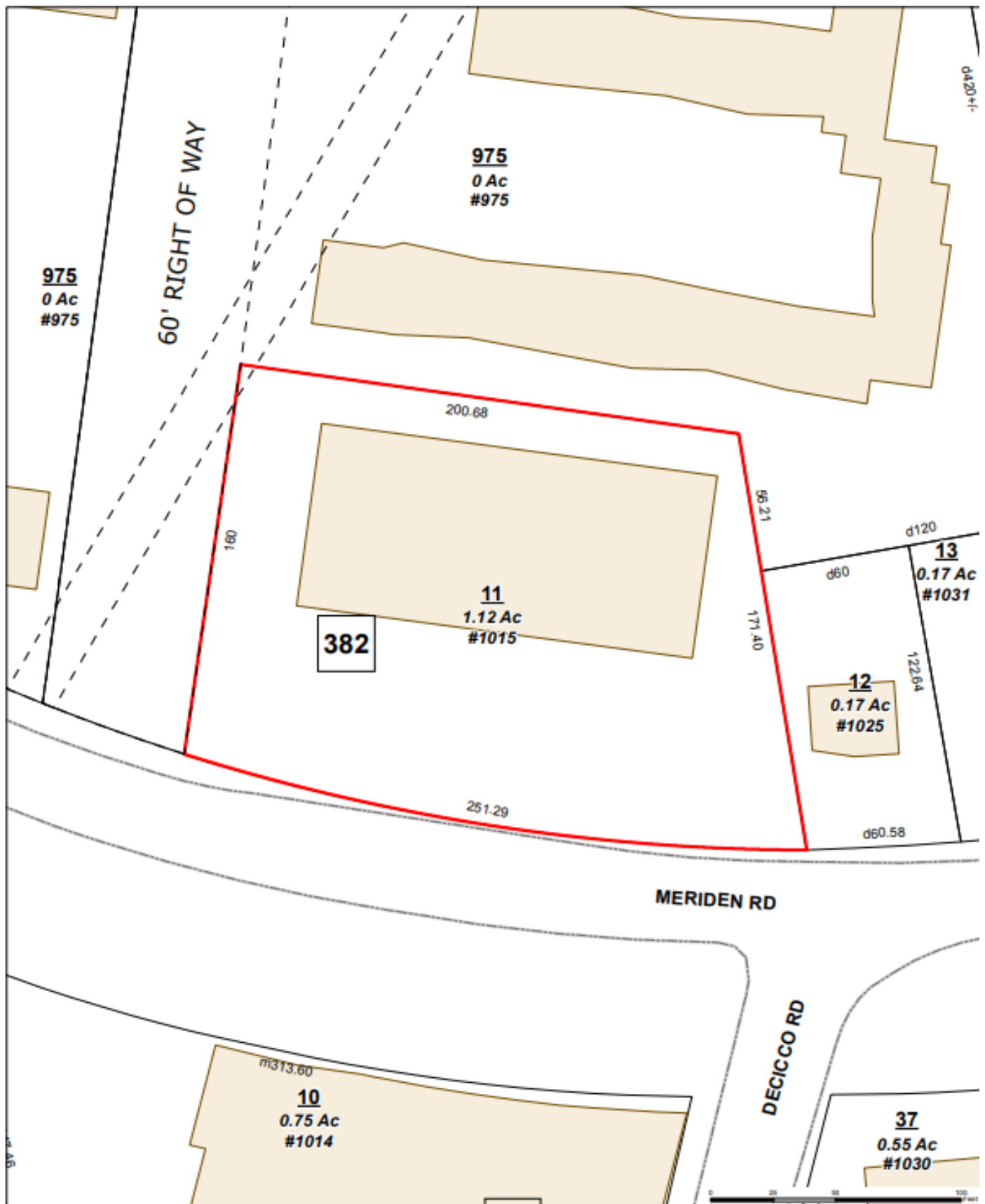
Unit 5
1,600 +/- s/f
Open Space with Small Office



Garage Unit

400 +/- s/f





City of Waterbury
Public Works Department

MBL: **0329-0382-0011**
ADDRESS: **1015 MERIDEN RD**

This map is for informational purposes only and has not been prepared for, or suitable for legal, engineering, or surveying purposes. Users of this information should review or consult the primary data and information sources to verify the usability of the information. The City of Waterbury makes no warranties, express or implied, as to the use of the information obtained herein.

