

# FOR LEASE

**CONTACT: MICHAEL GRIEDER  
or ED GODIN, SIOR**  
E-mail: [Mgrieder.gpb@gmail.com](mailto:Mgrieder.gpb@gmail.com)  
[EgodinPB@gmail.com](mailto:EGodinPB@gmail.com)  
[www.GodinPropertyBrokers.com](http://www.GodinPropertyBrokers.com)  
Phone: 203-577-2277 Fax: 203-577-2100



**1369 Southford Rd  
Southbury, CT 06488**

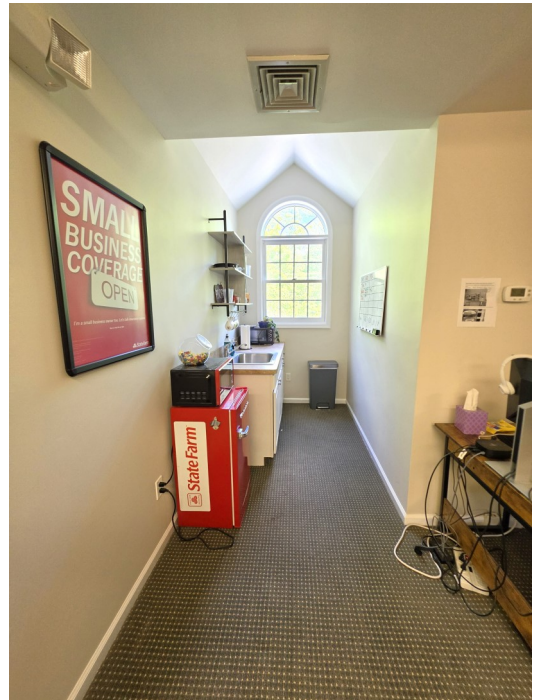
**Great High Traffic Location  
Good Parking & Visibility (RT 67 DOT Cars Daily 10,400)**

**900 +/- S/F 2nd Floor Office  
\$1,450 Gross + Utilities**

**Small Garage/Storage Units with  
Drive-in Doors Available**

**+/- 840 S/F : \$800/mo  
+/- 1,600 S/F : \$1,500/mo**



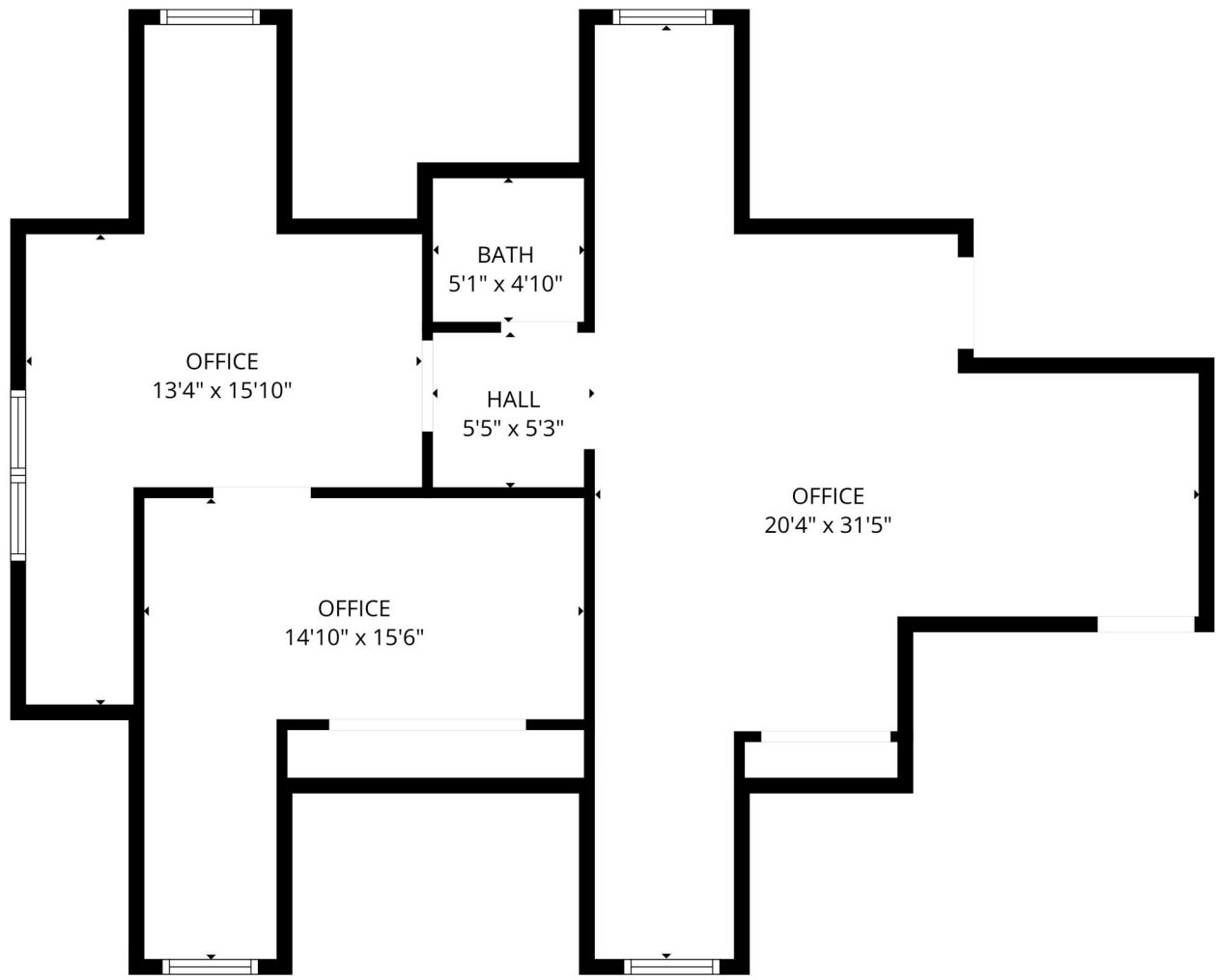


**2nd Floor - 900 +/- S/F  
\$1,450.00 Gross + Utilities**

**Lower Level Storage Units**



**2nd Floor - 900 +/- S/F**  
**\$1,450.00 Gross + Utilities**



FLOOR PLAN CREATED BY CUBICASA APP. MEASUREMENTS DEEMED HIGHLY RELIABLE BUT NOT GUARANTEED.